



LW4642



crochet

Designed by Katherine Eng

What you will need:

RED HEART® With Love®: 4 skeins 1303 Aran **A**, and 2 skeins 1308 Tan **B**.

Susan Bates® Crochet Hook: 6mm [US]-10]

Yarn needle

GAUGE: Rounds 1 and 2 = 4" (10 cm) across; One Square = 17 x 17" (43 x 43 cm). **CHECK YOUR GAUGE.** Use any size hook to obtain the gauge.

Buy Yarn



RED HEART® With Love®, Art. E400 available in solid color 7oz (198g), 370 yd (338m) and multicolor 5oz (141g), 230 yd (211m) skeins



Lacy Floral Throw

Neutral, timeless colors and a beautiful lacy pattern combine for a gorgeous crocheted throw. Perfect for any style of home decorating, this is the ideal wedding or anniversary gift.

Throw measures 54 x 54" (137 x 137 cm).

Special Stitches

Cl (3 treble crochet cluster) = *[Yarn over] twice, insert hook in indicated stitch, yarn over and draw up a loop, [yarn over and draw through 2 loops on hook] twice; repeat from * 2 more times, yarn over and draw through all 4 loops on hook.

dc2tog (double crochet 2 stitches together) = [Yarn over, insert hook in next stitch, yarn over and pull up loop, yarn over, draw through 2 loops] twice, yarn over, draw through all 3 loops on hook.

dc4tog (double crochet 4 stitches together) = [Yarn over, insert hook in next stitch, yarn over and pull up loop, yarn over, draw through 2 loops] 4 times, yarn over, draw through all 5 loops on hook.

tr2tog-over-space (treble crochet 2 stitches together over a chain-space) = *[Yarn over] twice, insert hook in next st, yarn over and pull up a loop, [yarn over and draw through 2 loops on hook] twice**, skip next chain-space; repeat from * to **, yarn over and draw through all 3 loops on hook.

Notes

1. Throw is made from nine squares. All nine squares are made separately. Then a border is worked around each square. Squares are joined to previous squares while the border is worked.
2. Squares will flare somewhat until decreases are made and border is completed.
3. After all squares are joined, edging is worked around entire outer edge of throw.

SQUARES (make 9)

With **A**, ch 7; join with slip st in first ch to form a ring.

Round 1 (right side): Ch 3 (counts as first dc here and throughout), work 23 dc in ring; join with slip st in top of beginning ch—24 dc.

Round 2: Ch 3, 2 dc in next st, dc in next st, *ch 2, dc in next dc, 2 dc in next dc, dc in next dc; repeat from * 6 more times, ch 2; join with slip st in top of beginning ch—32 dc and 8 ch-2 spaces (consisting of eight 4-dc groups for petals, separated by ch-2 spaces).

Round 3: Ch 3, dc in same st as join, dc in next 2 sts, 2 dc in next st, *ch 2, skip next ch-2 space, 2 dc in next st, dc in next 2 sts, 2 dc in next st; repeat from * 6 more times, ch 2, skip last ch-2 space; join with slip st in top of beginning ch—48 dc and 8 ch-2 spaces (eight 6-dc petals).

Rounds 4 and 5: Ch 3, dc in same st as join, dc in each st to 1 dc before next ch-2 space, 2 dc in next dc, *ch 2, skip next ch-2 space, 2 dc in next st, dc in each st to 1 dc before next ch-2 space, 2 dc in next dc; repeat from * 6 more times, ch 2, skip last ch-2 space; join with slip st in top of beginning ch—Eight 10-dc petals) at the end of Round 5.

Continued..



2015
WOMEN'S CHOICE AWARD
AMERICA'S MOST RECOMMENDED
YARN BRAND



Please Note: Print this pattern using Landscape Orientation.

Find more ideas & inspiration: redheart.com

©2015 Coats & Clark

RedHeart.com

Round 6: Ch 3, dc in same st as join, dc in each st to 1 dc before next ch-2 space, 2 dc in next dc, *ch 2, skip next ch-2 space, 2 dc in next st, dc in each st to 1 dc before next ch-2 space, 2 dc in next dc; repeat from * 6 more times, ch 2; skip the beginning ch and join with slip st in first dc—Eight 12-dc petals.

Round 7: Ch 3, dc in next 8 sts, dc2tog, *ch 3, (dc, ch 5, dc) in next ch-2 space (corner made), ch 3, dc2tog, dc in next 8 sts, dc2tog, ch 3, skip next ch-2 space **, dc2tog, dc in next 8 sts, dc2tog; repeat from * 3 more times ending last repeat at **; skip the beginning ch and join with slip st in first dc—Eight 10-dc petals and 4 corners.

Round 8: Ch 3, dc in next 6 sts, dc2tog, *ch 3, skip next ch-3 space, dc in next dc, ch 3, (dc, ch 5, dc) in corner ch-5 space, ch 3, dc in next dc, ch 3, skip next ch-3 space, dc2tog, dc in next 6 sts, dc2tog, ch 5, sc in next ch-3 space, ch 5 **, dc2tog, dc in next 6 sts, dc2tog; repeat from * 3 more times ending last repeat at **; skip the beginning ch and join with slip st in first dc—Eight 8-dc petals.

Round 9: Ch 3, dc in next 4 sts, dc2tog, *[ch 3, skip next ch-3 space, dc in next dc] twice, ch 3, (Cl, ch 5, Cl) in corner ch-5 space, ch 3, [dc in next dc, ch 3, skip next ch-3 space] twice, dc2tog, dc in next 4 sts, dc2tog, [ch 5, sc in next ch-5 space] twice, ch 5 **, dc2tog, dc in next 4 sts, dc2tog; repeat from * 3 more times ending last repeat at **; skip the beginning ch and join with slip st in first dc—Eight 6-dc petals.

Round 10: Ch 3, dc in next 2 sts, dc2tog, *[ch 3, skip next ch-3 space, dc in next dc] twice, ch 3, skip next ch-3 space, Cl in next Cl, ch 5, (Cl, ch 5, Cl) in corner ch-5 space,

ch 5, Cl in next Cl, ch 3, skip next ch-3 space, [dc in next dc, ch 3, skip next ch-3 space] twice, dc2tog, dc in next 2 sts, dc2tog, [ch 5, sc in next ch-5 space] 3 times, ch 5 **, dc2tog, dc in next 2 sts, dc2tog; repeat from * 3 more times ending last repeat at **; join with slip st in top of beginning ch—Eight 4-dc petals. Fasten off.

BORDERS

Note: Squares are joined into 3 rows of 3 squares each. Refer to diagram before working Border Round to determine the number of neighboring squares to which the current square is to be joined.

First Square

Border Round (right side): From right side, join **B** with sc in last ch-5 space of any corner (between the 3rd and 4th Cl), *ch 7, skip next Cl and ch-3 space, tr2tog-over-space, ch 7, skip next ch-3 space, dc4tog, [ch 5, sc in next ch-5 space] 4 times, ch 5, dc4tog, ch 7, skip next ch-3 space, tr2tog-over-space, ch 7, skip next ch-3 space and Cl, sc in next ch-5 space, ch 7, (sc, ch 11, sc) in corner ch-5 space, ch 7 **, sc in next ch-5 space; repeat from * 3 more times ending last repeat at **; join with slip st in first sc. Fasten off.

Second-Ninth Square

Notes:

1. One or two sides of each square are joined to one side of one or two neighboring squares.
2. To join squares, the chain-spaces across a side (from corner to corner) are threaded through the corresponding chain-spaces of the neighboring square(s), as follows:



ch-11-join: Ch 6, drop loop from hook, insert hook from right side to wrong side through corresponding corner ch-11 of neighboring square, replace dropped loop on hook and draw loop through, ch 6.

ch-11-join (use when 4 corners meet joining fifth, sixth, eighth, and ninth squares): Visiting the 3 neighboring squares counter-clockwise. Ch 6, drop loop from hook, insert hook from right side to wrong side through corresponding corner ch-11 of first neighboring square, replace dropped loop on hook and draw loop

through, ch 1, drop loop from hook, skip next neighboring square (diagonally across), insert hook from right side to wrong side through corresponding corner ch-11 of next neighboring square, replace dropped loop on hook and draw through, ch 6.

ch-7-join: Ch 4, drop loop from hook, insert hook from right side to wrong side through corresponding corner ch-7 of neighboring square, replace dropped loop on hook and draw loop through, ch 4.

Continued...



Please Note: Print this pattern using Landscape Orientation.

Find more ideas & inspiration: redheart.com

©2015 Coats & Clark

RedHeart.com

Page 2 of 4

ch-5-join: Ch 3, drop loop from hook, insert hook from right side to wrong side through corresponding corner ch-5 of neighboring square, replace dropped loop on hook and draw loop through, ch 3.

Border Round (right side)

Begin first side: From right side, join **B** with sc in last ch-5 space of any corner (between the 3rd and 4th Cl), ch 7, skip next Cl and ch-3 space, tr2tog-over-space, ch 7, skip next ch-3 space, dc4tog, [ch 5, sc in next ch-5 space] 4 times, ch 5, dc4tog, ch 7, skip next ch-3 space, tr2tog-over-space, ch 7, skip next ch-3 space and Cl, sc in next ch-5 space, ch 7.

Join next side to neighboring square(s):

(Sc, ch-11-join, sc) in corner ch-5 space, *ch-7-join, sc in next ch-5 space, ch-7-join, skip next Cl and ch-3 space, tr2tog-over-space, ch-7-join, skip next ch-3 space, dc4tog, [ch-5-join, sc in next ch-5 space] 4 times, ch-5-join, dc4tog, ch-7-join, skip next ch-3 space, tr2tog-over-space, ch-7-join, skip next ch-3 space and Cl, sc in next ch-5 space, ch-7-join, (sc, ch-11-join, sc) in corner ch-5 space; if joining to next neighboring square, repeat from * once more.

Complete remaining sides: Ch 7, sc in next ch-5 space, *ch 7, skip next Cl and ch-3 space, tr2tog-over-space, ch 7, skip next ch-3 space, dc4tog, [ch 5, sc in next ch-5 space] 4 times, ch 5, dc4tog, ch 7, skip next ch-3 space, tr2tog-over-space, ch 7, skip next ch-3 space and Cl, sc in next ch-5 space, ch 7, (sc, ch 11, sc) in corner ch-5 space, ch 7 **, repeat from * if needed ending last repeat at **; join with slip st in first sc. Fasten off.

EDGING

Round 1 (right side): With right side facing, join **B** with sc in first ch-7 space immediately following any corner ch-11 space, [*ch 5, sc in next ch-space, ch 5, hdc in next tr2tog, [ch 5, sc in next ch-space] 7 times, ch 5, hdc in next tr2tog, [ch 5, sc in next ch-space] twice **, ch 5, sc in next corner chain-space, ch 5, skip seam between squares, sc in corner chain-space of next square, ch 5, sc in next ch-space; repeat from * 2 more times, ending last repeat at **, ch 5, (sc, [ch 5, sc] twice) in corner ch-11 space ***, ch 5, sc in next ch-space] 4 times ending last repeat at ***, ch 3, dc in first sc to join (last ch-3 and joining dc count as last ch-5 space).

Round 2 (wrong side): Ch 1, turn, sc in first space (the space formed by the ch-3 and joining dc), *ch 5, sc in next ch-5 space; repeat from * around; ch 3, dc in first sc to join (last ch-3 and joining dc count as last ch-5 space).

Round 3 (right side): Ch 3 (counts as first dc), turn, 2 dc in first space, *ch 1, 3 dc in next ch-5 space; repeat from * around working (3 dc, [ch 1, 3 dc] 3 times) in each corner ch-5 space; join with slip st in top of beginning ch.

Round 4 (right side): (Slip st, ch 1, sc, ch 3, sc) in next dc, do not turn, *ch 2, (sc, ch 3, sc) in center dc of next 3-dc group; repeat from * around, ch 2; join with slip st in first sc. Fasten off.

FINISHING

Weave in all ends.

ABBREVIATIONS

A, B, = Color A, Color B; **ch** = chain; **dc** = double crochet; **hdc** = half double crochet; **sc** = single crochet; **st(s)** = stitch(es); **tr** = treble (triple) crochet; **()** = work directions in parentheses into same st; **[]** = work directions in brackets the number of times specified; *****, ******, **or ***** = repeat whatever follows the *****, ******, or ******* as indicated.

See Stitch Diagram on next page



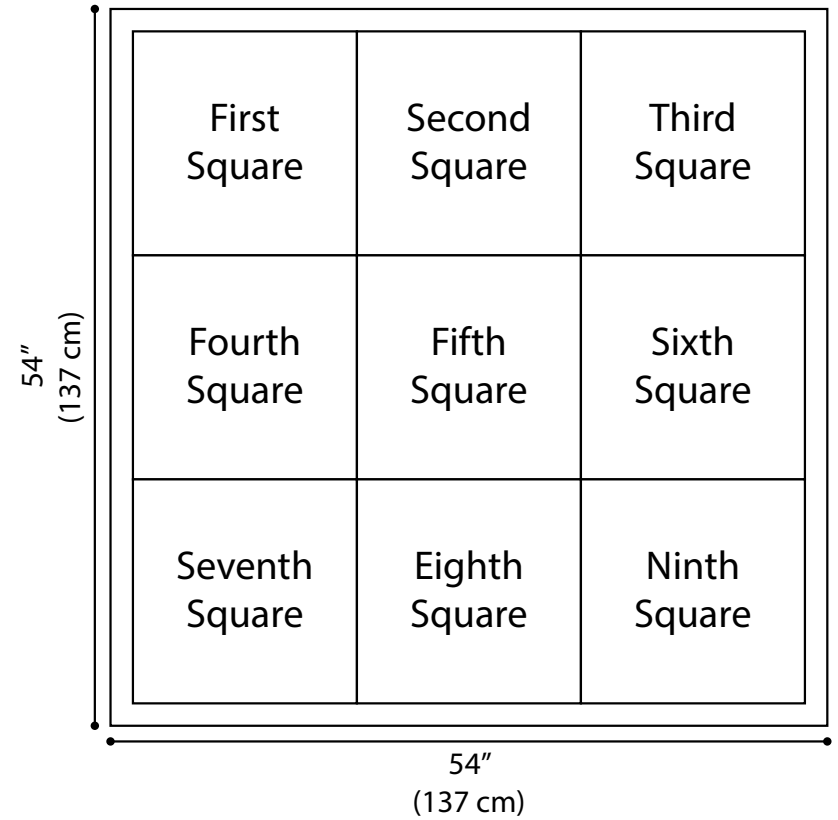
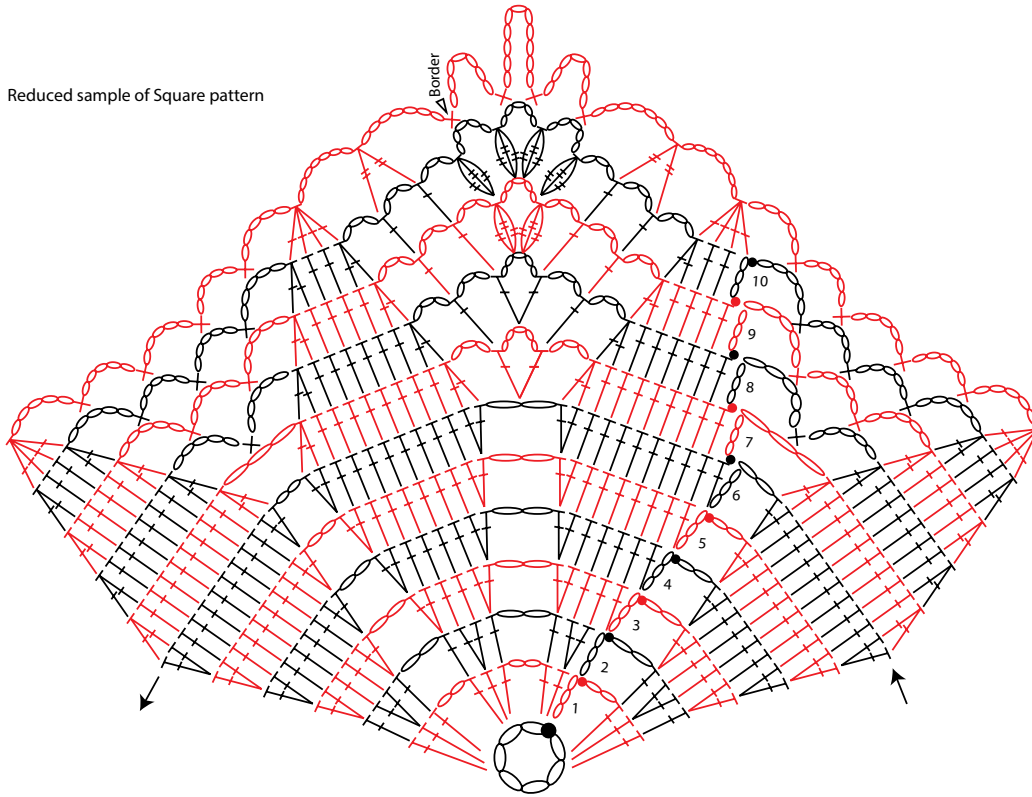
Please Note: Print this pattern using Landscape Orientation.

Find more ideas & inspiration: redheart.com

©2015 Coats & Clark

RedHeart.com

Reduced sample of Square pattern



KEY

- = slip stitch (slip st)
- = chain (ch)
- × = single crochet (sc)
- ⊥ = double crochet (dc)
- ⊥⊥ = double crochet 2 together (dc2tog)
- ⊥⊥⊥ = double crochet 4 together (dc4tog)
- ⊥⊥⊥ = treble crochet 2 together over a chain-space (tr2tog-over-space)
- ⊥⊥⊥ = 3 treble crochet cluster (Cl)

 Please Note: Print this pattern using Landscape Orientation.

Find more ideas & inspiration: redheart.com