

# Anchor<sup>®</sup>



## Giraffe Bag



Designed by Ilaria Caliri - Airali design

[bestcraftsideas.com](http://bestcraftsideas.com)

Design No.: ANC0003-126



   @bestcraftsideas.com

MEZ Needlecraft GmbH, 2021. All Rights Reserved.



## ANC0003-126 Giraffe Bag

Anchor Creativa 8-ply - 50g - Art. N° 4620008 - \* (Colour n°)

Crochet



1 x \*00208, \*00383

### EXTRAS:

black embroidery thread; tapestry needle; pins; stitch markers; fiberfill for stuffing

Intermediate



N° 3 mm



N° 18



18 cm wide and tall when made with the indicated yarn



# Giraffe Bag

### TENSION:

18dc x 18rounds = 10x10 cm

### NOTES

The bag is worked in tapestry crochet in 2 colours. The top and the strap are sewn to the main part. The muzzle, ears and horns are sewn to the top part of the bag.

### STITCHES AND ABBREVIATIONS (UK CROCHET TERMS)

**ch:** chain

**st:** stitch/es

**slst:** slip stitch

**dc:** double crochet

**inc:** single crochet increase

**dec:** single crochet decrease

**rnd:** round

### BASE

Start in yellow. Ch31.

**Row 1:** skip the first ch from the hook, 30dc, turn [30].

**Rows 2-4:** ch1, dc in all 30 st, turn [30].

Continue with the main part.

### MAIN PART

Crochet around the base to start working in rounds. Work in continuous rounds.

**Rnd 1:** work on the first short side of the base, make 1dc in each row-end, 30dc along the first long side, 1dc in each row-end of the second short side, 30dc along the second long side [68].

**Rnd 2:** (inc in next st, 2dc, inc in next st, 30dc) repeat 2 times [72].

Continue working in tapestry crochet, carrying the unused colour inside the stitches. Change colour before completing the last stitch of the previous colour.

**Rnds 3-32:** dc in all st following the tapestry crochet chart [72].

Fasten off the brown yarn. Continue in yellow.

**Rnd 33:** dc in all 72 st [72].

**Rnd 34:** 7dc, ch5, skip 5 st {note: this arch should be positioned on the side, adjust the number of initial dc if it sits in the wrong place}, 31dc, ch5, skip 5 st, 24dc [72].

**Rnd 35:** 7slst, 7dc inserting the crochet hook under the ch-arch, 31slst, 7dc inserting the crochet hook under the ch-arch, 24slst [76].

Fasten off and weave in the end.

### TOP PART / HEAD

Make in yellow. Ch14.

**Row 1:** skip the first ch from the hook, 12dc, 3dc in last ch, continue on the other side of the chain, 12dc, turn [27].

**Row 2:** ch1, 12dc, inc 3 times, 12dc, turn [33]

**Row 3:** ch1, 12dc, (inc, 1dc) repeat 3 times, 12dc, turn [36]

**Row 4:** ch1, 12dc, (2dc, inc) repeat 3 times, 12dc, turn [39]

**Row 5:** ch1, 12dc, (inc, 3dc) repeat 3 times, 12dc, turn [42]

**Row 6:** ch1, 12dc, (4dc, inc) repeat 3 times, 12dc, turn [45]

**Row 7:** ch1, 12dc, (inc, 5dc) repeat 3 times, 12dc, turn [48]

**Row 8:** ch1, 12dc, (6dc, inc) repeat 3 times, 12dc, turn [51]

**Row 9:** ch1, 12dc, (inc, 7dc) repeat 3 times, 12dc, turn [54]

**Row 10:** ch1, 12dc, (8dc, inc) repeat 3 times, 12dc, turn [57]

**Row 11:** ch1, 12dc, (inc, 9dc) repeat 3 times, 12dc, turn [60]

**Row 12:** ch1, 12dc, (10dc, inc) repeat 3 times, 12dc, turn [63]

**Row 13:** ch1, 12dc, (inc, 11dc) repeat 3 times, 12dc, turn [66]

**Row 14:** ch1, 12dc, (12dc, inc) repeat 3 times, 12dc, turn [69]

Fasten off leaving a tail for sewing the straight side to the back of the bag, between rounds 33 and 34.

### MUZZLE

Make in brown. Ch7.

**Rnd 1:** skip the first ch from the hook, 5dc, 5dc in last ch, continue on the other side of the chain, 4dc, 4dc in last st [18].

**Rnd 2:** (6dc, inc 3 times) repeat 2 times [24]

**Rnd 3:** 6dc, (inc, 1dc) repeat 3 times, 6dc, (inc, 1dc) repeat 3 times [30]

**Rnd 4:** 6dc, (2dc, inc) repeat 3 times, 6dc, (2dc, inc) repeat 3 times [36]

**Rnd 5-6:** sc in all 36 st [36]

Fasten off leaving a tail for sewing the muzzle to the head, between rows 5-14.

Add toy stuffing to the muzzle while sewing.

Use black embroidery thread to stitch the eyes and the nostrils in straight stitch.

### EARS

Make 2 in yellow. Ch4.

**Row 1:** skip the first ch from the hook, 2dc, 3dc in last ch, continue on the other side of the chain, 2dc, turn [7].

**Row 2:** ch1, 3dc, 3dc in next st, 3dc, turn [9]

Slst in first st of Row 2 to shape the ear. Fasten off leaving a tail for sewing the ears to the head.



**HORN**

Make 2 in brown.

**Rnd 1:** start 8dc in a magic ring, pull tight to close the ring, ch4, skip the first ch from the hook, 3dc, slst in first dc.

Fasten off leaving a tail for sewing the horn to the head.

**STRAP**

Make in brown. Ch180 - adjust the number of starting ch for a longer or shorter strap.

**Rnd 1:** skip the first ch from the hook, dc until last ch, 3dc in last ch, continue on the other side of the chain, dc in all st, 2dc in last st.

Fasten off leaving a tail for sewing the strap to the bag.

**WASHING ADVICE**

Always wash in the hottest temperature as possible - up to the temperature recommended, with a short spin. Use a lot of water if hand washing. For darker colours we recommend the use of discolouration sheets.

Do not bleach.

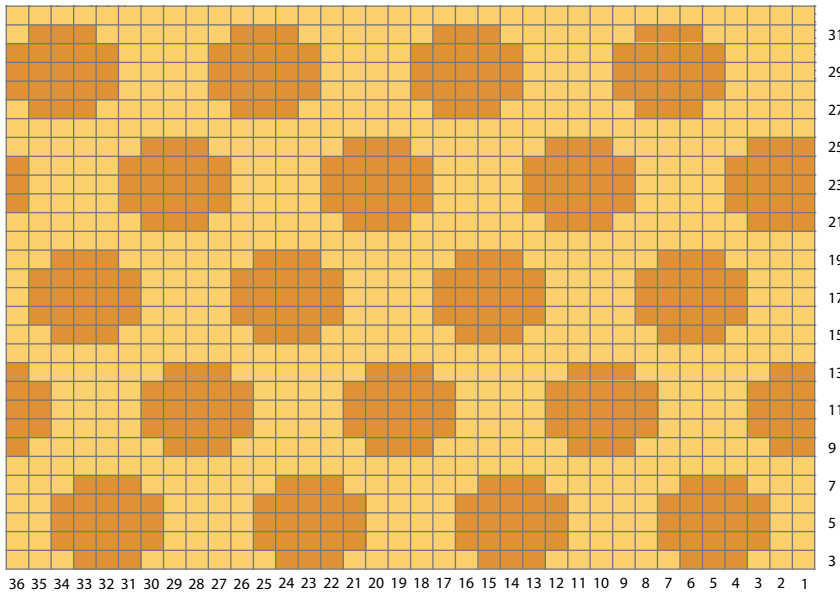
Do not tumble dry. Drip-dry on a horizontal surface.

Iron on a hot temperature setting using a damp cloth.

Professional dry cleaning in tetrachloroethylene.

Do not use optical brighteners (or any detergent containing optical brighteners).

**CHART**



**LEGEND**

- 00208
- 00383