

Anchor[®]



Finger Puppets



AnchorCrafts.com

[f](#) [@](#) [p](#) @anchorcrafting

Designed by Ameskeria

Design No.: ANC003-139

MEZ Needlecraft GmbH, 2021. All Rights Reserved.



ANC003-139 Finger Puppets

Anchor Creativa Fino 50 g Art. No. 4620004-*(colour n°)

Crochet



8 cm tall

Intermediate



1 x *00401; *00926; *00424; *00162; *00419; *00179; *00406; *00421; *00427; *00161
Embroidery thread: *00428; *00208



N° 2,5mm

EXTRAS: Scissors; Toy stuff

Finger Puppets

HOW TO MAKE

WOLF

Head

Using colour 00406 follow chart 1 to begin the head. Change to colour 00161 on round 7.
Stuff before decreasing. Cut yarn and weave ends in.

Body

Using colour 00161 follow chart 2 to make the body. Cut yarn, weave ends in and sew the body to the light part of the head.

Ears

Using colour 00161 follow chart 3 to make two ears. Leave a long tail when finishing the pieces. Use this tail to sew the ears to the top of the head.

Nose

Using colour 00406 follow chart 4 to make the nose. Leave a long tail when finishing and use it to sew the nose to center of the head.

Final touches

Using a yarn needle and colour 00428, embroider the center of the nose and the eyes, between rounds 7 and 8 of the head.

LITTLE RED RIDING HOOD

Head

Using colour 00401 follow chart 1 to make the head.
Stuff before decreasing. Cut yarn and weave ends in.

Hair

Using colour 00162 follow chart 2 to make the hair.
Leave a long tail when finishing. Place the head inside the hair and sew.
With the help of the hook, add 3 strands of thread colour 00162 at one side of the hair. Fold in half and make a braid. Tie with some thread colour 00424.
Repeat the braid on the other side.

Hood

Using colour 00424 follow chart 3 to make the hood. Leave a long tail when finishing. Place the head inside the hood and sew.

Body

Using colour 00424 follow chart 4 to make the body. Cut yarn, weave ends in and sew the body to the head.

Apron

Using colour 00926 introduce the hook between rounds 5 and 6 of the body and make a round of raised stitches. Work the apron on those stitches, as shown on chart 5.

Final touches

Using a yarn needle and colour 00428, embroider the eyes between rounds 7 and 8 of the head.

HUNTER

Head

Using colour 00401 follow chart 1 to make the head.
Stuff before decreasing. Cut yarn and weave ends in.

Hair

Using colour 00162 follow chart 2 to make the hair.
Leave a long tail when finishing. Place the head inside the hair and sew.

Body

Using colour 00419 follow chart 3 to begin the body. Change to colour 00179 on round 7. Cut yarn, weave ends in and sew the body to the head.

Hat

Using colour 00419 follow chart 4 to make the hat. Using colour 00208 embroider a line around the hat. Sew the hat to the head.

Belt

Using colour 00162 introduce the hook between rounds 5 and 6 of the body and make a round of raised stitches. Using colour 00208 embroider the buckle.

Final touches

Using a yarn needle and colour 00428, embroider the eyes between rounds 7 and 8 of the head.

GRANDMA

Head

Using colour 00401 follow chart 1 to make the head.
Stuff before decreasing. Cut yarn and weave ends in.

Hair

Using colour 00406 follow chart 2 to make the hair.
Leave a long tail when finishing. Place the head inside the hair and sew.

Body

Using colour 00421 follow chart 3 to make the body. Cut yarn, weave ends in and sew the body to the head.

Hat

Using colour 00427 follow chart 4 to make the hat. Cut yarn and weave ends in. Place the hat on the head.

Apron

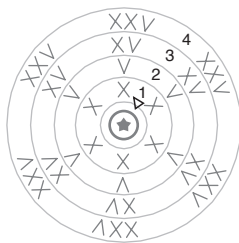
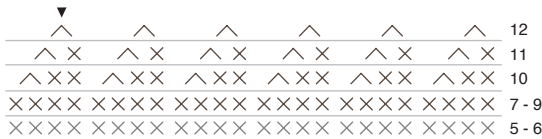
Using colour 00926 introduce the hook between rounds 5 and 6 of the body and make a round of raised stitches. Work the apron on those stitches, as shown on chart 5.

Final touches

Using a yarn needle and colour 00428, embroider the eyes between rounds 7 and 8 of the head.

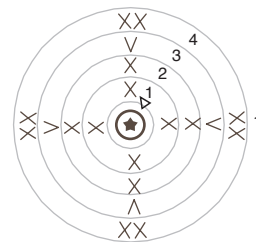
WOLF

HEAD



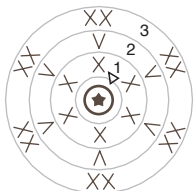
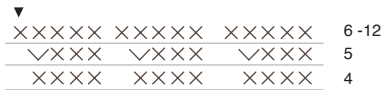
ROUND	STITCHES
1	6
2	12
3	18
4 - 9	24
10	18
11	12
12	6

EARS



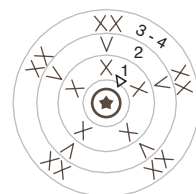
ROUND	STITCHES
1 - 2	4
3 - 4	8

BODY



ROUND	STITCHES
1	6
2 - 4	12
5 - 12	15

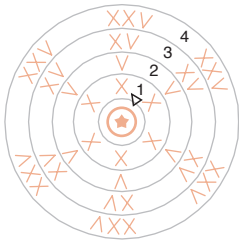
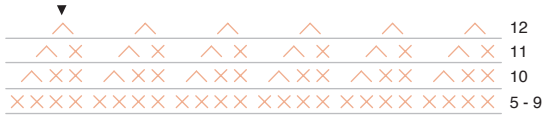
NOSE



ROUND	STITCHES
1 - 2	4
3 - 4	8

LITTLE RED RIDING HOOD

HEAD



ROUND	STITCHES
1	6
2	12
3	18
4 - 9	24
10	18
11	12
12	6

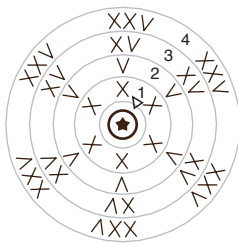
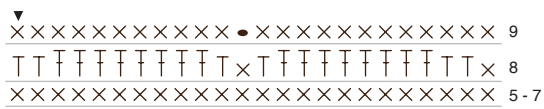
CROCHET

- *00401
- *00926
- *00424
- *00162
- *00419
- *00179
- *00406
- *00421
- *00427
- *00161

EMBROIDERY

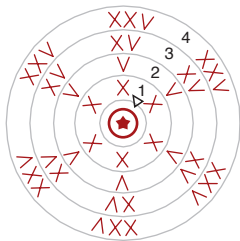
- *00428
- *00208

HAIR



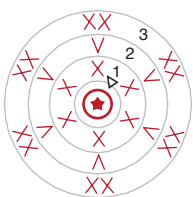
ROUND	STITCHES
1	6
2	12
3	18
4 - 9	24

HOOD



ROUND	STITCHES
1	6
2	12
3	18
4	24
5 - 12	27

BODY



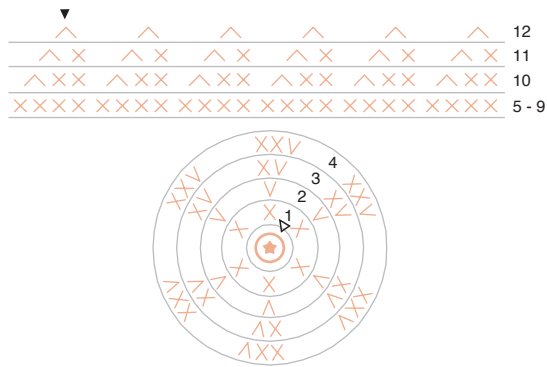
ROUND	STITCHES
1	6
2 - 4	12
5 - 12	15

APRON



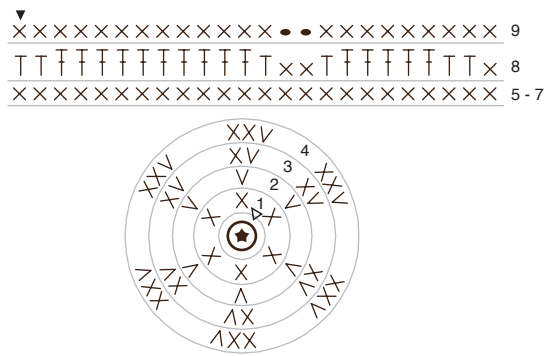
HUNTER

HEAD



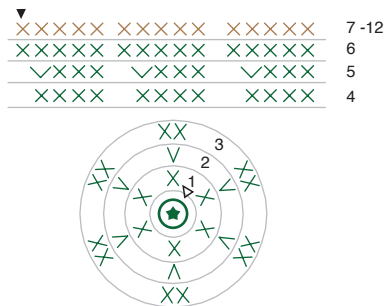
ROUND	STITCHES
1	6
2	12
3	18
4 - 9	24
10	18
11	12
12	6

HAIR



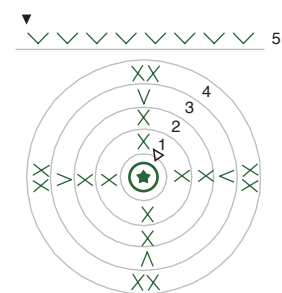
ROUND	STITCHES
1	6
2	12
3	18
4 - 9	24

BODY



ROUND	STITCHES
1	6
2 - 4	12
5 - 12	15

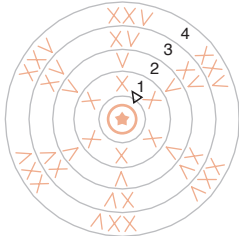
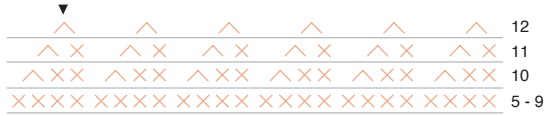
HAT



ROUND	STITCHES
1 - 2	4
3 - 4	8
5	16

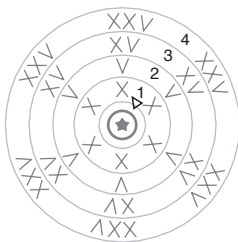
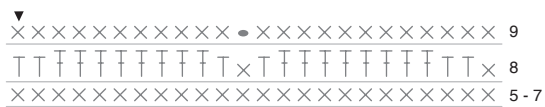
GRANDMA

HEAD



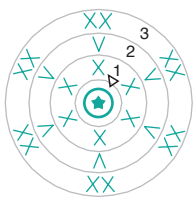
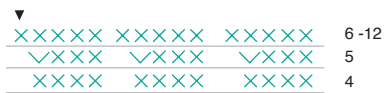
ROUND	STITCHES
1	6
2	12
3	18
4 - 9	24
10	18
11	12
12	6

HAIR



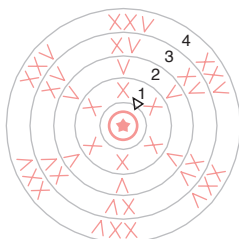
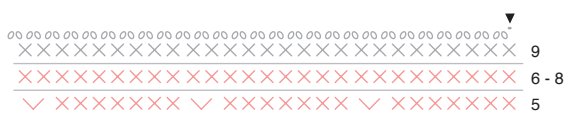
ROUND	STITCHES
1	6
2	12
3	18
4 - 9	24

BODY



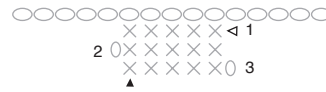
ROUND	STITCHES
1	6
2 - 4	12
5 - 12	15

HAT



ROUND	STITCHES
1	6
2	12
3	18
4	24
5 - 12	27

APRON



KEY TO CROCHET SYMBOLS

- ⊛ Magic ring
- Chain
- Slip stitch
- × Double crochet
- ⊥ Half treble crochet
- ⊥ Treble crochet
- ∨ Increase
- ∧ Decrease
- ▷ Beginning
- ▶ End

WASHING ADVICE

Always wash in the hottest temperature as possible - up to the temperature recommended, with a short spin. Use a lot of water if hand washing. For darker colours we recommend the use of discolouration sheets.

Do not bleach.

Do not tumble dry. Drip-dry on a horizontal surface.

Iron on a hot temperature setting using a damp cloth.

Professional dry cleaning in tetrachloroethylene.

Do not use optical brighteners (or any detergent containing optical brighteners).