

Anchor[®]

Granny Square Shrug



bestcraftsideas.com



Designed by Ameskeria

Design No.: 0022362-00001-03

MEZ Needlecraft GmbH, 2020. All Rights Reserved.



Anchor Organic Cotton 50 g - art. N° 4660004 - *(colour n°)

Intermediate



S-M

90 cm

63 cm

8x

M-L

100 cm

70 cm

8x

chest contour

length

*00387



4mm

MILWARD



N° 18

MILWARD

Granny Square Shrug

TENSION

13 treble stitches and 11 rows = 10 X 10 cm measured over double crochet.

PATTERN

Make 15 granny squares following the instructions in **chart A** (Granny Square). Once completed, cut yarn off and weave all ends in.

Join the granny squares together by making slip stitches. Place 3 rows of 5 grannies each, as shown on the **chart B** (Granny Square Joining). Weave all ends in.

Join your yarn and follow **chart C** (Size Selection). Pay attention as it is crocheted in the round, joining each end of the round with its beginning.

Crochet only the first round for sizes S-M and all rounds for sizes M-L. Cut yarn off and weave all ends in.

To shape the shrug follow **chart D** (Shaping Shrug). Just sew the indicated 9 cm on both sides. Cut yarn off and weave ends in.

Final touches: Join your yarn in one of the chain spaces from the body. Follow **chart 1**, repeating the sequence as many times as needed to complete the round.

Pay attention that it is crocheted in the round, joining each end of the round with its beginning.

Join your yarn in one of the chain spaces from the sleeves. Follow **chart 2**, repeating the sequence as many times as needed to complete the round.

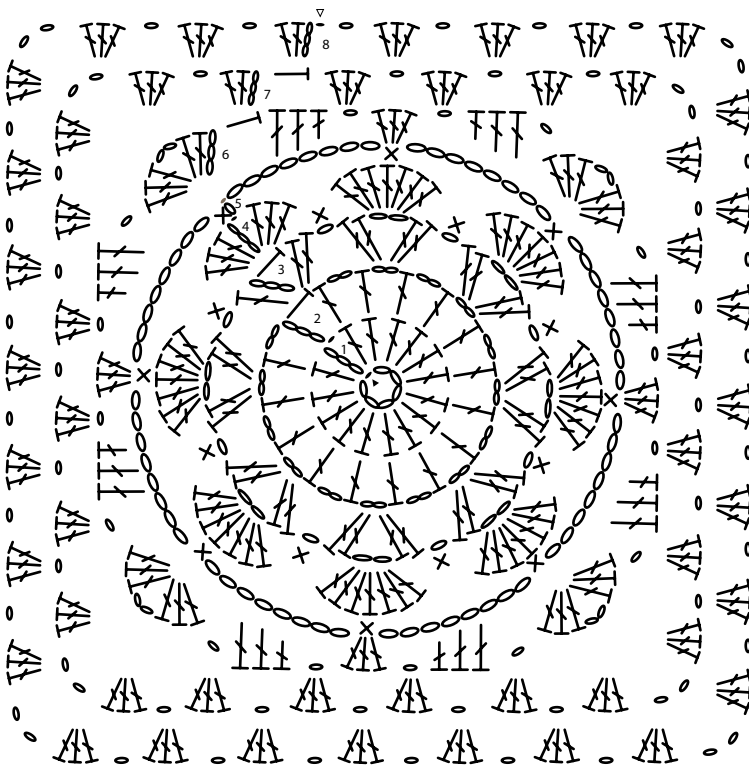
Pay attention that it is crocheted in the round, joining each end of the round with its beginning.

Repeat in the other sleeve.

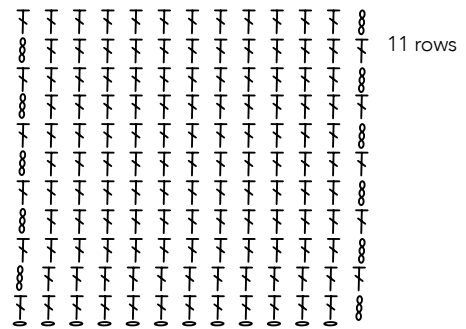
Cut yarn off and weave ends in.

Chart A - GRANNY SQUARE (X15)

Measure = 16 X 16 cm



TENSION: 10 X 10 CM



13 stitches

Chart B - GRANNY SQUARE JOINT

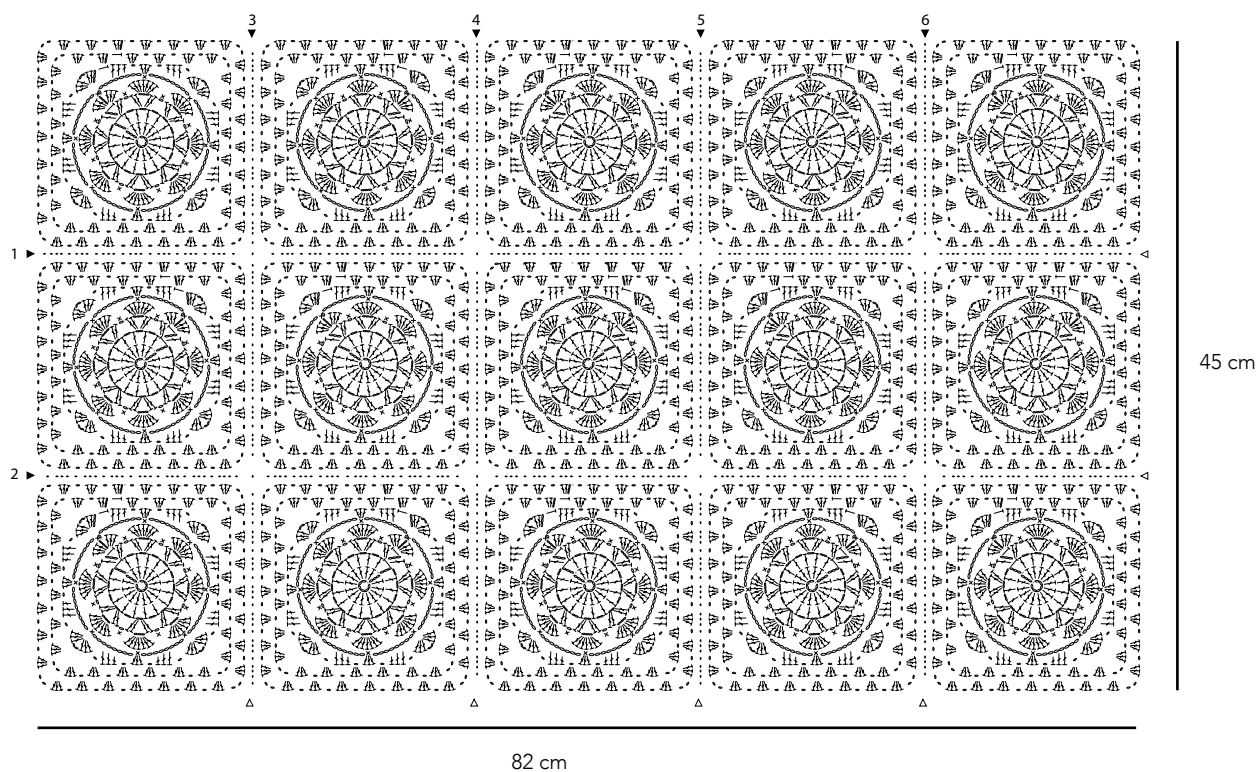


Chart C - SIZE SELECTION

Size S - M : crochet round 1

Size M - L : crochet round 1 to 4

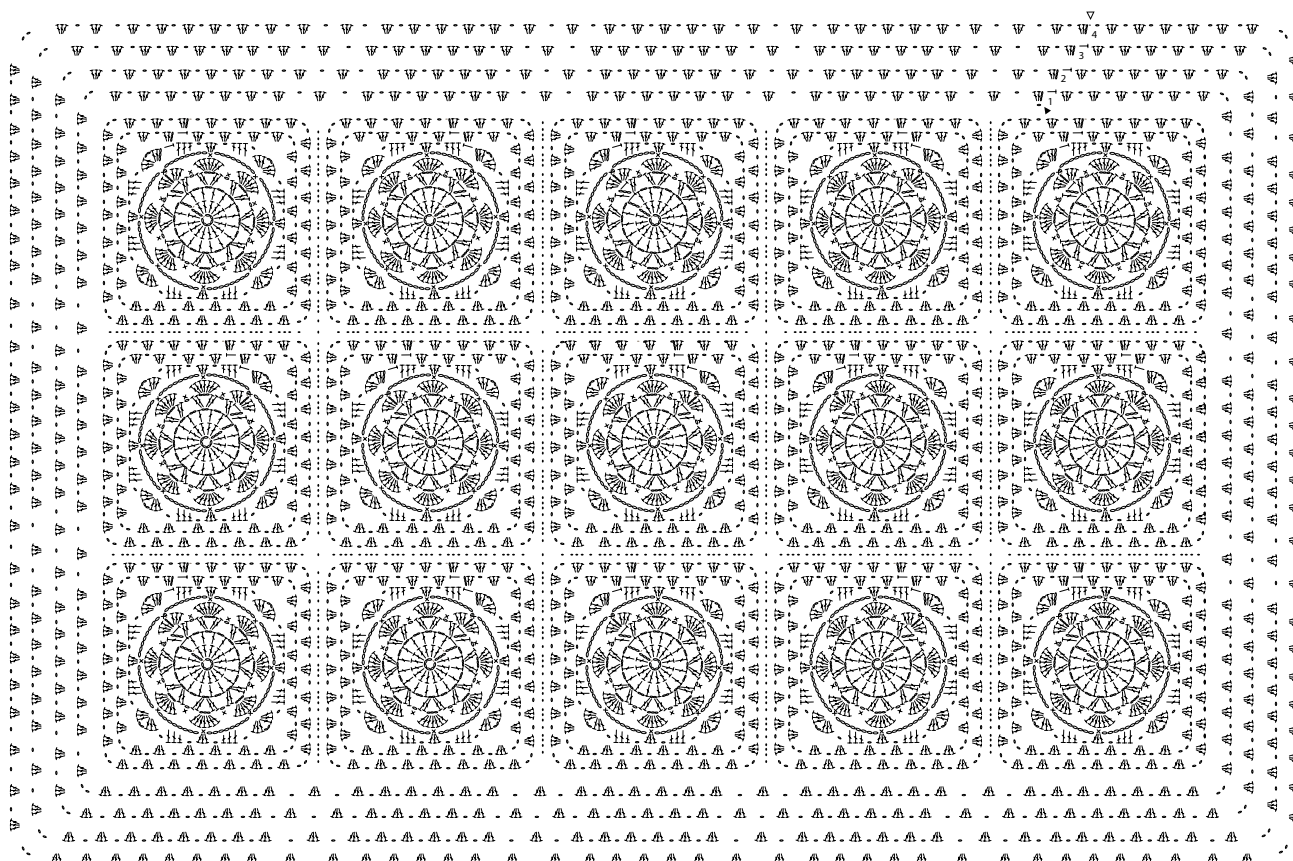
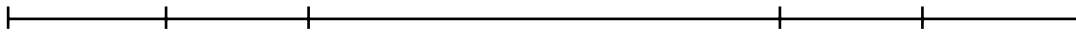
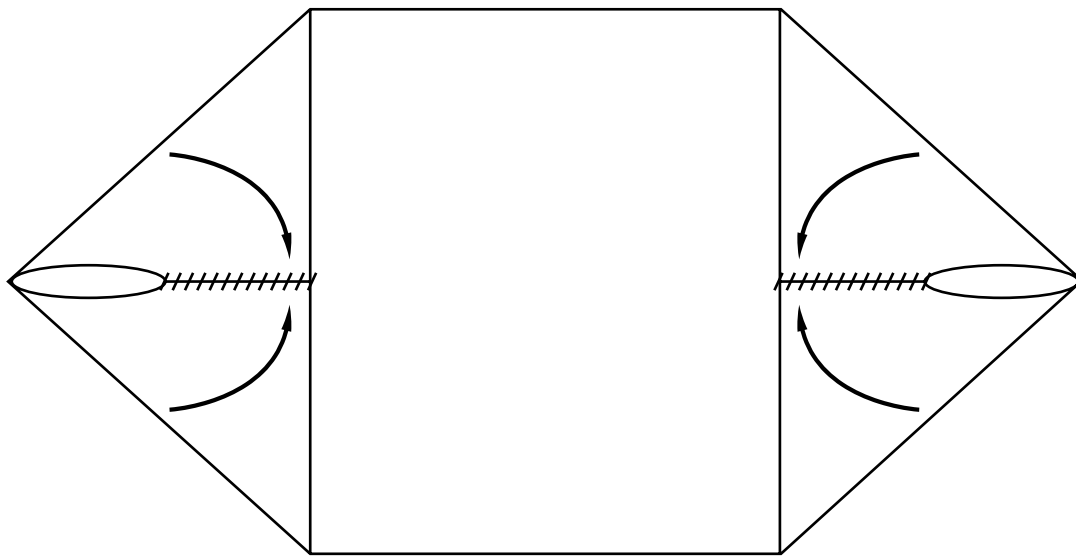


Chart D - SHAPING SHRUG



11 cm
13 cm

9 cm
9 cm

45 cm
50 cm

9 cm
9 cm

11 cm
13 cm

Size S - M
Size M - L

Chart E - FINAL TOUCHES

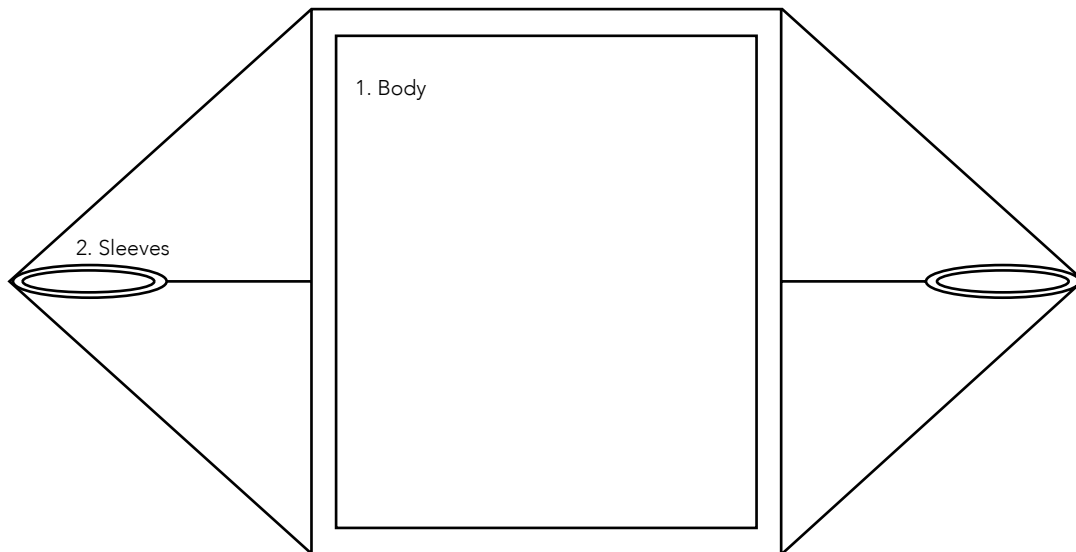
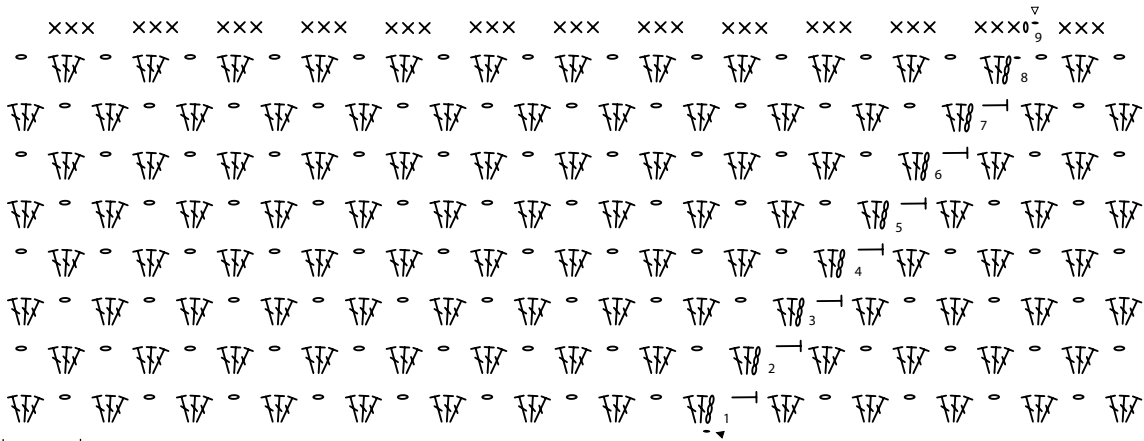
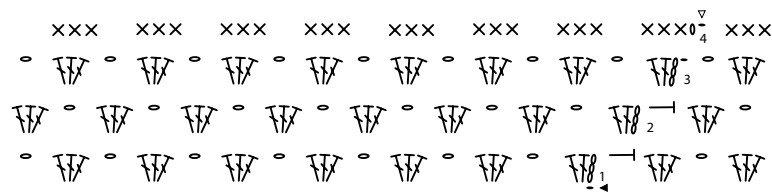


Chart 1 - BODY



patt rep

Chart 2 - SLEEVES



patt rep

CHART KEY

- Chain Stitch
- Slip Stitch
- × Double Crochet
- ┆ Half treble Crochet
- ⌣ Treble Crochet
- ▶ Beginning
- ▷ End

WASHING ADVICE

Always wash in as warm a water temperature as possible - up to the temperature recommended, with a short spin. Use a lot of water if hand washing. For darker colours we recommend the use of discolouration sheets.

Do not bleach.

Do not tumble dry. Drip-dry on a horizontal surface.

Iron on a hot temperature setting using a damp cloth.

Professional dry cleaning in tetrachloroethylene.

Do not use optical brighteners (or any detergent containing optical brighteners). We recommend to use a softener to preserve the natural softness of the yarn.