

Anchor[®]



A timeless classic



bestcraftideas.com

[@bestcraftideas](https://www.instagram.com/bestcraftideas)

Designed by Natalie Spiteri

Design No.: 0022189-00000-03

MEZ GmbH, 2018. All Rights Reserved



0022189-00000-03 Dress

Anchor Freccia 12 Art. Nr. 4771012-



6 x 07901



1 x 1,50 mm (no 7) crochet hook



One size

Crochet



Expert



Dress

The dress is crocheted in three parts. For part A, a front and a back are crocheted. Then, a front and a back are crocheted for part B. Finally, a front and a back are also crocheted for part C and they are joined together with the front and backs of parts A and B.

DRESS PART A (CHART 1)

Front:

Ch 133. Crochet the front according to chart 1. Crochet the neckline from the 36th row. Crochet off at the end of the 49th row.

Back:

Ch 133. Crochet the back according to chart 1. Crochet the neckline from the 42nd row. Crochet off at the end of the 49th row.

DRESS PART B (chart 2)

Front and back:

Crochet and join eight B1 rosettes.

Crochet and join eight B2 rosettes and join them with rosette border B1.

According to chart 2, join at a B1 rosette and crochet the upper edge of part B.

According to chart 2, join at a B2 rosette and crochet the lower edge of part B.

DRESS PART C (CHART 3)

Crochet and join four C rosettes for the top of the front part. According to chart 3, join at the very narrow part of the rose border and continuing crocheting around. On the last round, join part C with part A and B. Crochet the back in the same way, and also join the rosette borders with the front ones.

FINISHING OFF

Sew up the side seams and shoulder seams.

WASHING INSTRUCTIONS

All our threads are produced in accordance with Oeko-tex standards. PH values are tested and all our colours dye lots adhere to Global fastness standards. However, it is important to follow our thread washing instructions. Particularly with dark colors, excess dye can remain on the thread. To minimize any potential bleeding of excess dyestuff it is important to wash the products in THE HOTTEST TEMPERATURE possible, in accordance with the specifications of the fabrics, and use a large amount of water. Please make sure that you also follow the fabric washing instructions. As a precaution, you can also use decolorating sheets that you can find in any supermarket.

Key to crochet symbols

➤ Begin

➤ End

○ 1 ch (chain)

● 1 slst (slip stitch)

× 1 dc (double crochet)

| 1 half treble

| 1 tr (treble)

| 1 dtr (double treble)

| 1 ttr (triple treble)

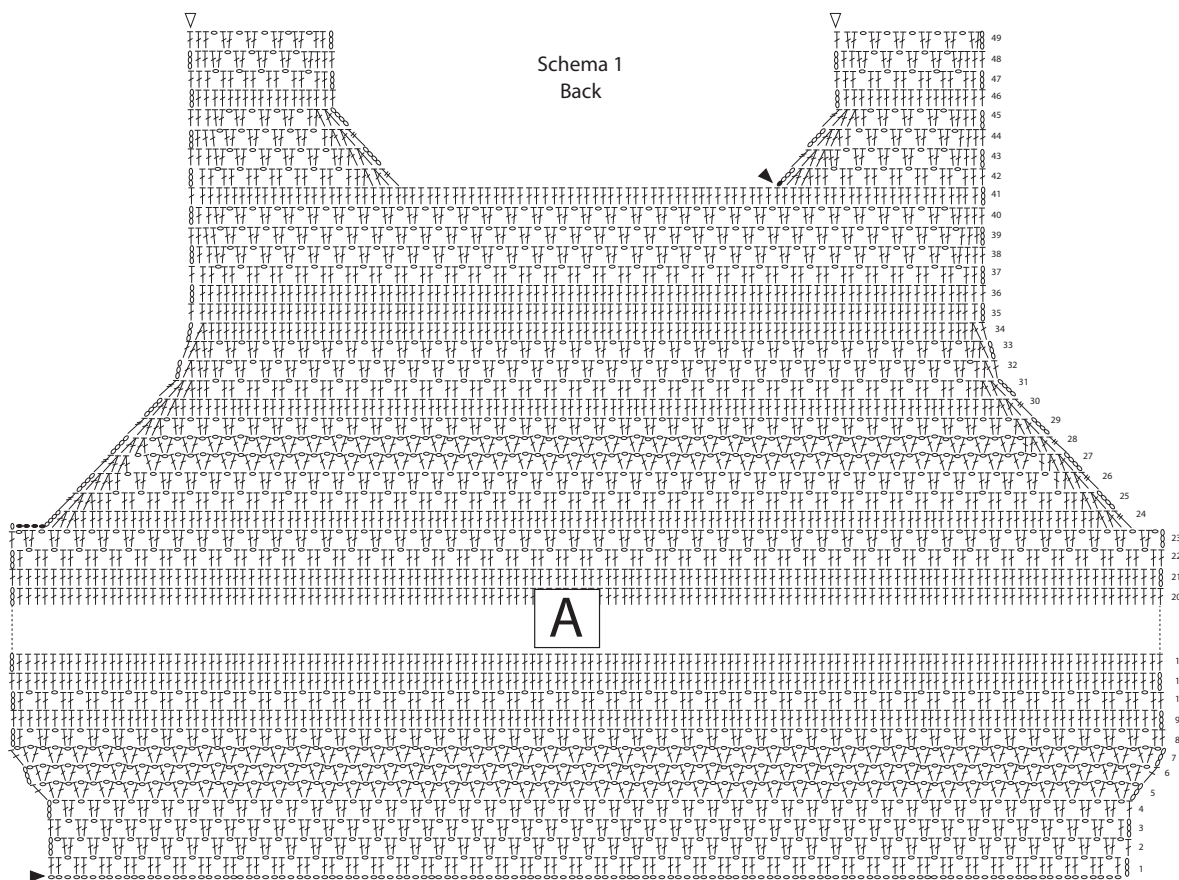
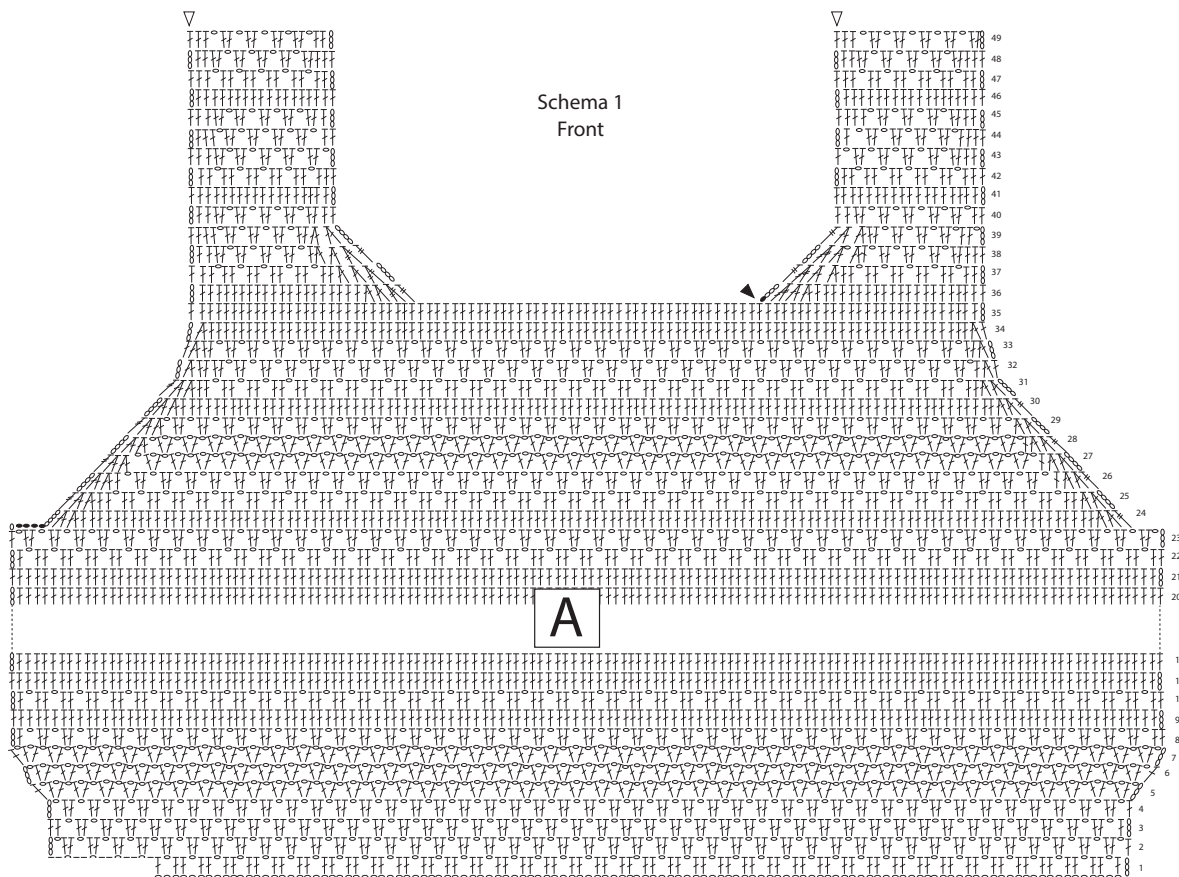
| Dc back loop only

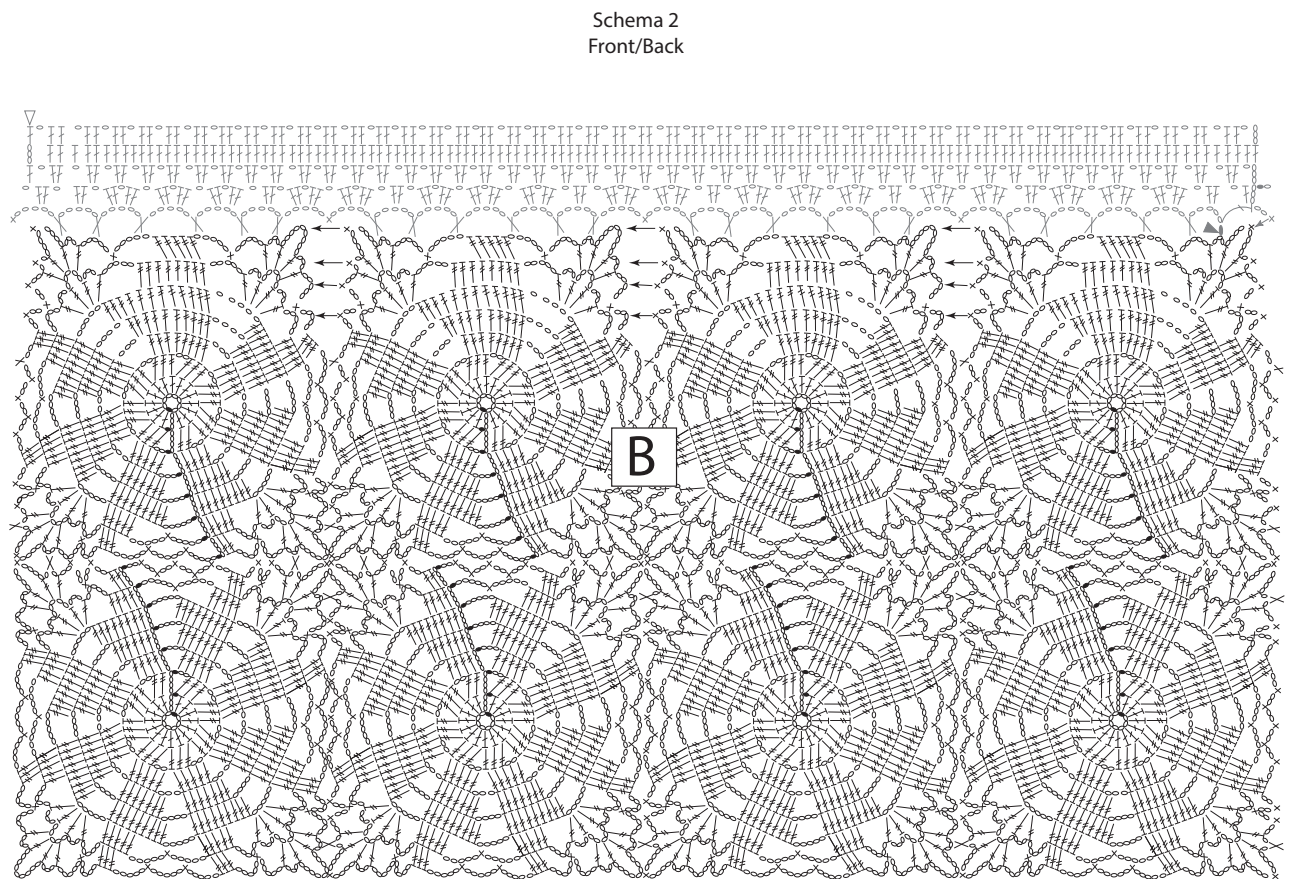
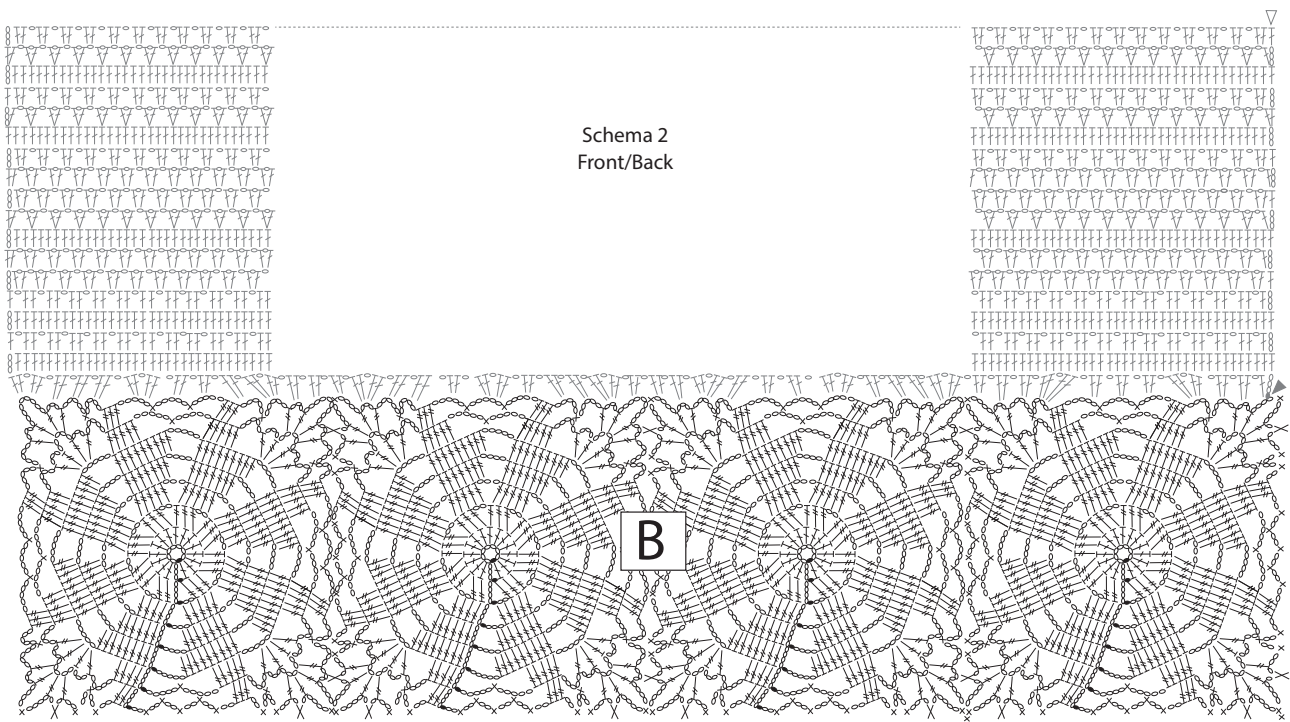
⋈ 2 tr crocheted off together

⋈ 2 double treble croched off together

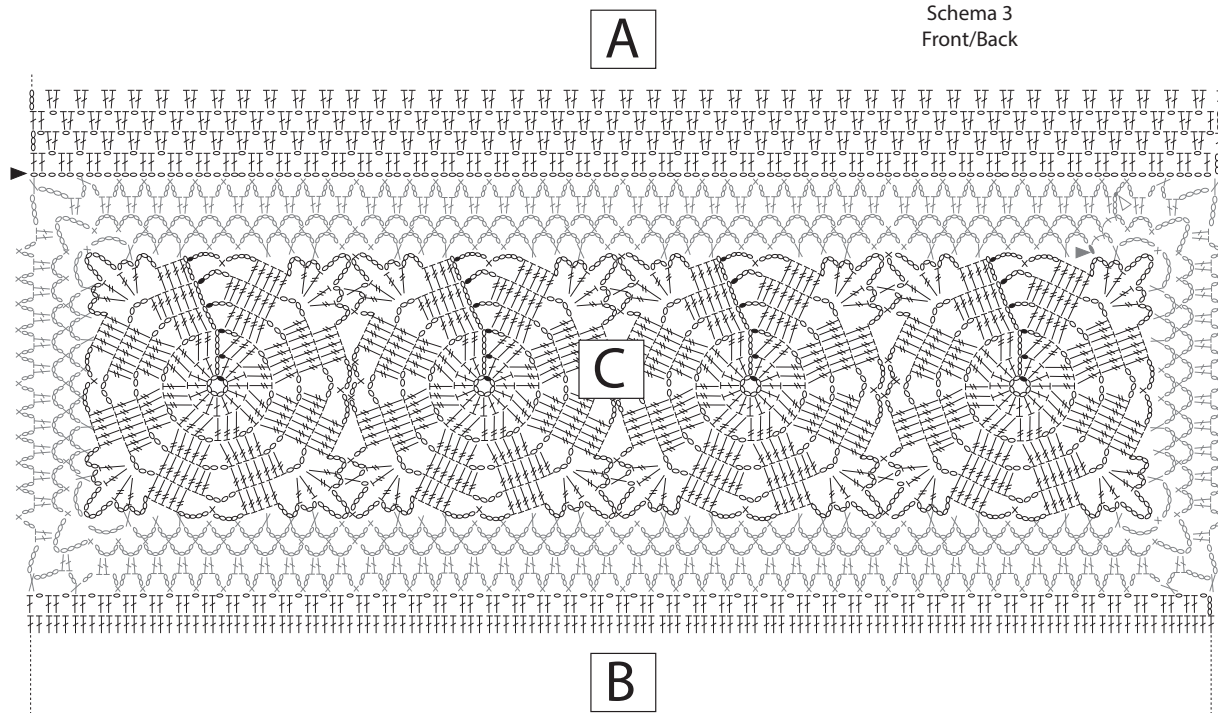
⋈ 4 double treble croched off together

⊙ picot

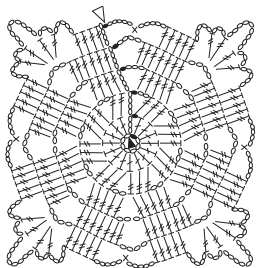




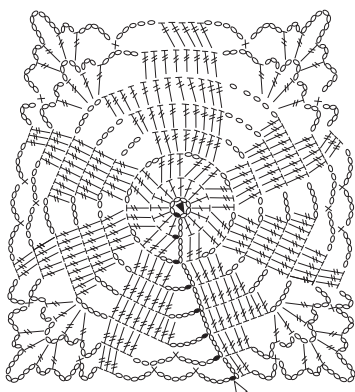
Schema 3
Front/Back



Rosette
C



Rosette
B 1



Rosette
B 2

